

MEP Site Visit Report

Demo House - Visit 01

Final MEP snagging inspection

PROJECT AND VISIT DETAILS

Project	Demo House	Visit	Visit 01
Date	09/07/2026	Prepared by	Demo Engineer
Client	Demo Client	Purpose	MEP snagging inspection
Attendees	Demo Main Contractor, Demo Electrical Contractor, Demo Mechanical Contractor		

REPORT OF VISIT

The site visit was carried out to review the visible MEP installation and record outstanding items noted during the inspection. The items below are to be reviewed and closed out by the relevant contractor before the next visit or prior to ceiling closure where noted.

DISCIPLINE COMMENTS

Electrical

Electrical containment, distribution, local controls and second fix items were reviewed where visible. Items requiring completion, labelling or final connection have been recorded below.

Mechanical

Mechanical plant, pipework, ventilation and access arrangements were reviewed where visible. Items requiring completion, insulation, access confirmation or commissioning have been recorded below.

Builders Work / Coordination

Access openings, riser locations and coordination items were reviewed where visible. Final access panels and builder's work openings are to be coordinated before closure.

General

The inspection was visual only and limited to areas accessible at the time of the visit.

2
URGENT OPEN

3
NEW ACTION

0
CARRIED FORWARD

1
CLOSED

11
PHOTOS

ACTION TRACKER

URGENT ACTIONS REQUIRING ATTENTION

A001 Kitchen

Open Urgent New AP01

Mechanical contractor to confirm final kitchen extract arrangement, commissioning status and access requirements before the ceiling and joinery are closed.

Discipline: Mechanical **Action by:** Mechanical contractor - Demo Mechanical Contractor **Due:** 08/07/2026

ACTION PHOTO AP01



Kitchen services installation requiring confirmation of final extract arrangement and access.

PLAN LOCATION



A006 Ceiling void / living area

Open Urgent New AP02

Main contractor to confirm final access panel location and complete fire stopping around service penetrations prior to ceiling closure.

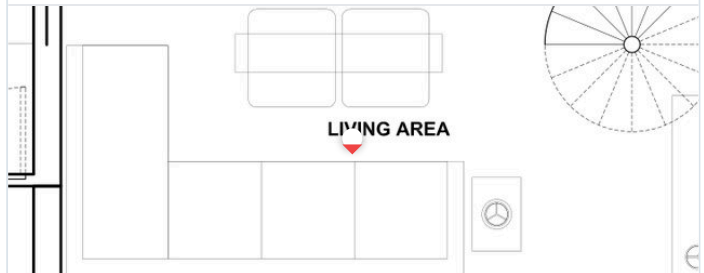
Discipline: Builders Work / Coordination **Action by:** Main contractor - Demo Main Contractor **Due:** 07/07/2026

ACTION PHOTO AP02



Ceiling void access and service penetrations requiring final coordination prior to closure.

PLAN LOCATION



NEW ACTIONS RAISED THIS VISIT

A002 Utility cupboard

Open High New AP03

Electrical contractor to complete final labelling to local isolators and update the distribution board schedule before handover.

Discipline: Electrical **Action by:** Electrical contractor - Demo Electrical Contractor **Due:** 12/07/2026

ACTION PHOTO AP03



Utility cupboard local controls and isolators requiring final labelling.

PLAN LOCATION



A003 Powder room

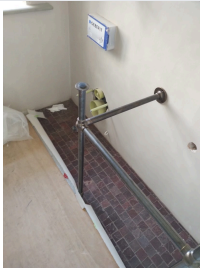
In progress Medium New AP04

Public health contractor to complete sanitaryware final connection and confirm no leaks once the installation is complete.

Update: Installation in progress at the time of the visit.

Discipline: Public Health **Action by:** Public Health contractor - Demo Public Health Contractor **Due:** 16/07/2026

ACTION PHOTO AP04



Powder room sanitaryware final connection to be completed and checked.

PLAN LOCATION



A004 Living area joinery

Open High New AP05

Electrical contractor to tidy and properly support loose low voltage and control cabling within the joinery/access area.

Discipline: Electrical **Action by:** Electrical contractor - Demo Electrical Contractor

ACTION PHOTO AP05



Loose low voltage and control cabling to be tidied and supported.

PLAN LOCATION



ACTIONS CLOSED THIS VISIT

A005

Ensuite

Closed

Medium

Closed

AP06

Specialist contractor to confirm final interface status and provide commissioning information for review.

Update: Closed following confirmation during the visit.

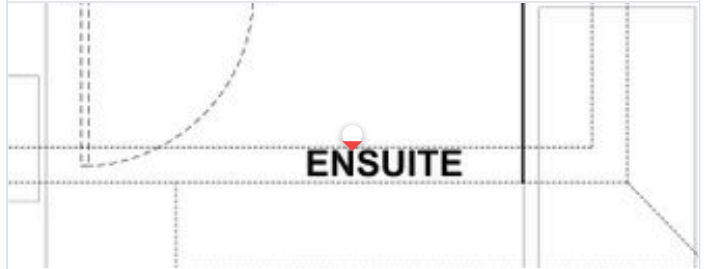
Discipline: Fire Alarm / Life Safety **Action by:** Fire Alarm contractor - Demo Fire Alarm Contractor

ACTION PHOTO AP06



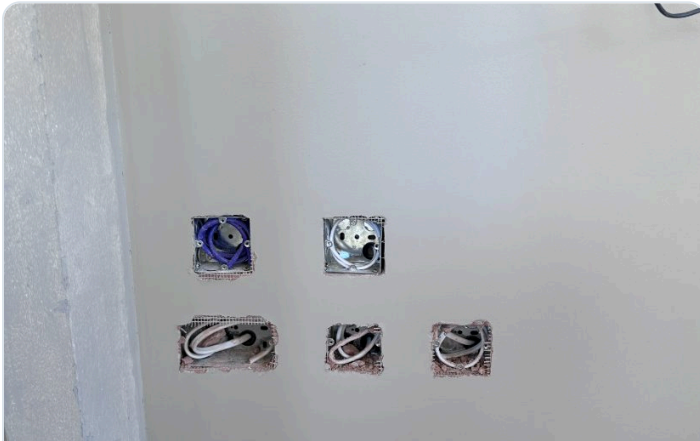
Specialist interface item reviewed and closed following contractor confirmation.

PLAN LOCATION



GENERAL PHOTO LOG

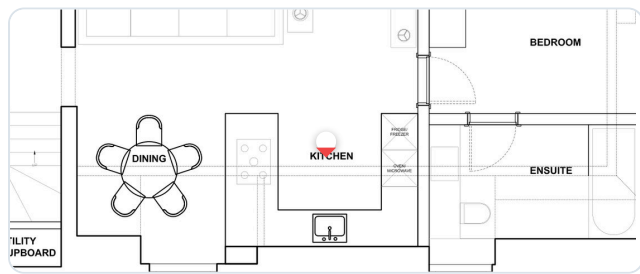
GENERAL



G01 Kitchen

Kitchen services and controls reviewed where visible.

Plan location: 4th Floor GA Plan · Demo · DEMO-GA-04



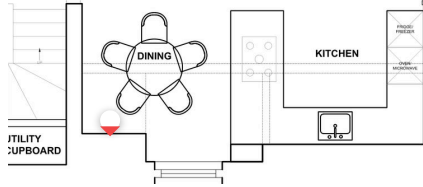
ELECTRICAL



E01 Utility cupboard

Local services cupboard reviewed for final labelling, access and second fix completion.

Plan location: 4th Floor GA Plan · Demo · DEMO-GA-04



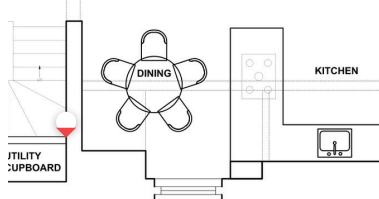
MECHANICAL



M01 Plant room

General view of plant room installation reviewed during the site visit.

Plan location: 4th Floor GA Plan · Demo · DEMO-GA-04



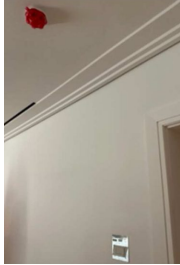
RFI 001 Fire Alarm / Life Safety

Further information required High Linked A005 RP01

RFI title: Confirm purpose of additional detector / control item

Site comment / response: Contractor to confirm whether the device forms part of the fire alarm, leak detection or standalone control system and provide marked-up information for review.

RFI PHOTO RP01



Contractor to confirm whether the device forms part of the fire alarm, leak detection or standalone control system and provide marked-up information for review.

PLAN LOCATION



Q002 Builders Work / Coordination

Open Medium Linked A004 RP02

RFI title: Confirm access panel location for services within the living area / joinery zone.

Site comment / response: Final access panel location to be agreed before closing up works.

RFI PHOTO RP02



Final access panel location to be agreed before closing up works.

PLAN LOCATION



REPORT NOTES

This report records observations made during a visual site visit only. The contractor remains responsible for the installation, testing, commissioning and statutory compliance of the works.

This report records visible items reviewed during the visit only and should be read in conjunction with the project drawings, specification and contractor commissioning records.